

## JMD-3



Accessory: X-Axis power feed, 0–1000mm/min, with feed limit switches (Stock no. 50000055)



Digital display for spindle speed and spindle travel

## JMD-3 – MILLING / DRILLING CENTER

- ◆ Solid cast iron design for vibration free operation
- ◆ Powerful 1.35 HP brushless DC-motor
- ◆ Variable 100–1750 rpm speed range
- ◆ Digital display of spindle speed and spindle travel
- ◆ Left hand spindle rotation and tapping function standard
- ◆ Large spindle bearings guarantee stability during milling
- ◆ Tiltable head for inclined and horizontal work
- ◆ Large compound table, precision machined with adjustable dovetail guides
- ◆ Front located handwheel for convenient head up/down adjustment

### Standard equipment

- ◆ Variable speed control with digital display
- ◆ Micro adjustable spindle downfeed with digital display
- ◆ 1–13 mm keyless chuck with MT-2 arbour
- ◆ Draw bar M12
- ◆ Drilling and milling guard

Stock number 230V	50000050M
Model	JMD-3
Drilling/tapping capacity (ST 37)	Ø 20 mm / M10
Cutting capacity of face mill	Ø 50 mm
Cutting capacity of end mill	Ø 20 mm
Throat	230 mm
Max. distance between spindle and table	410 mm
Spindle taper	MT-2 / M12
Spindle speeds: variable	100–1750 rpm
Spindle stroke	70 mm
Head tilting range	90° / 45°r
Max. table stroke x-axis	350 mm
Max. table stroke y-axis	150 mm
Table size	160 x 510 mm
Number of T-slots in table	3 / 12 mm
Motor power output	1.35 HP / S <sub>r</sub> 100%
Motor power input	1.8 HP / S <sub>e</sub> 40%
Dimension (LxWxH)	700 x 560 x 850 mm
Weight	165 kg

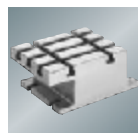
### Accessories



- ◆ 50000058 Quick vise with votary table 80 x 100 mm



- ◆ 50000055 X-axis power feed



- ◆ 50000057 Riser table for horizontal milling

More accessories see site 28-29